

# FMB - Laser Safety

Keyence  
Laser Marker

meets

flexible safety system

Safety in a new way.  
Customised to your application.



Freehand Laser Safety



FLS – Marking Flexible



CLS – Marking Flexible

# FMB - Laser Safety

Laser protection systems for the labelling process with laser class 1 and protection of performance level e.

All FMB laser protection systems have been tested in accordance with DIN EN ISO 13849-1 and fulfil the requirements of DIN EN 12254.

**The right safety system for your application.**



# Freehand Laser Safety

Your safety system for automated inline applications.

Freehand Laser Safety, the compact and self-securing laser protection system for your labelling process without a safety cabin.

Automated inline labelling

- Compact labelling system
- No large protective housing required

Fresh air intake through labyrinth, fumes are permanently sucked away from the lens

mech.  
Lift

Protection and component presence in one - through protective circuit monitoring

Ready to use

- Simple robot connection
- Flexible applications

# Freehand Laser Safety

## Technical Data

Housing dimensions (L x W x H)	620 x 230 x 450/580 mm	Height depends on laser
Laser safety	2-circuit protection level	Laser class 1, secure Performance Level e
Mouthpiece	Protection by form-fit	Replaceable via bayonet
Marking Laser	Keyence MD-X, MD-U, MD-F, ML-Z	adapted to your labeling requirements
Labeling area dimensions	120 x 120 mm or 330 x 330 mm	depends on laser
Suction cup connection	DN40	

## Basic configuration

Laser Safety	FMB – Freehand Laser Safety
Mouthpiece	for flat parts

## Accessories

Laser integration	Initial start-up / Integration of the Laser in Freehand Laser Safety by FMB
Suction Nano+	controlled suction for universal serial operation
Suction big for PVC	controlled suction for PVC marking
Contour / replace mouthpiece	manufactured according to your component CAD data
Component query	light switch, initiator, etc. possible

# FLS – Marking Flexible

The most flexible laser safety cell without barriers, Freehand Laser Safety integrated in a labelling table.

Component too large / heavy for the laser cell?  
No problem for the FLS - Marking Flexible

Protection and  
component presence  
in one - through  
protective circuit  
monitoring

mech.  
Lift

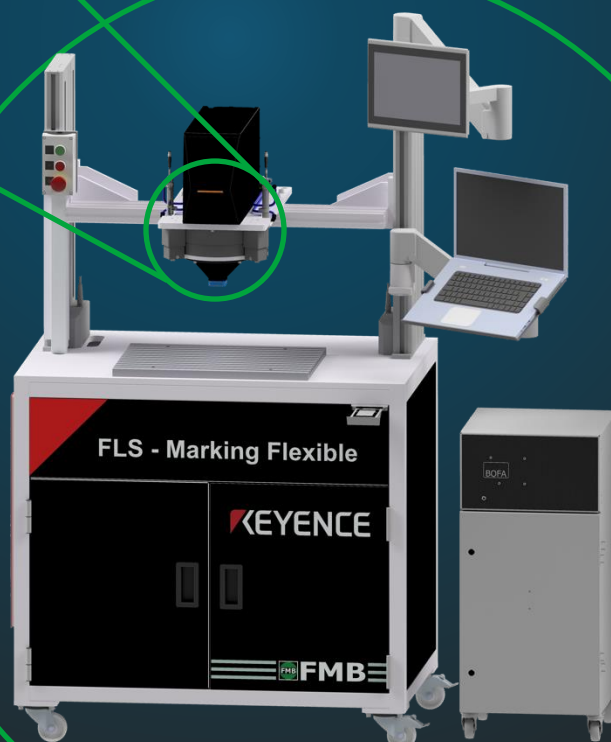
Scaling according to  
your needs possible

Various extraction  
systems

Labelling of large  
components, without  
disturbing housing

Labelling of entire  
assemblies

Can be automated by  
robot operation



# FLS – Marking Flexible

## Technical Data

Housing dimensions (L x W x H)	1.000 x 700 x 1.800 mm	
Workspace dimensions	600 x 400 x 400 mm	
Traversing range z-Axis	400 mm (electric)	
Laser safety	2-circle protection level	Laser class 1, secure Performance Level e
Mouthpiece	Protection by form-fit	replaceable via bayonet
Control options	Small control unit smart, SPS	
Marking Laser	Keyence MD-X, MD-U, MD-F, ML-Z	adapted to your labeling requirements
Labeling area dimensions	120 x 120 mm or 330 x 330 mm	depends on laser
Suction cup connection	DN30	
Electrical connection	230 V, 50 Hz	

## Basic configuration

Laser Safety	FMB – Freehand Laser Safety
Control system	Small control unit smart
Mouthpiece	for flat parts
Electric lifting columns	400 mm (Traversing range)
T-grooved plate	375 x 500 mm (Aluminum)
Laptop holder	375 mm (Pick-up width)

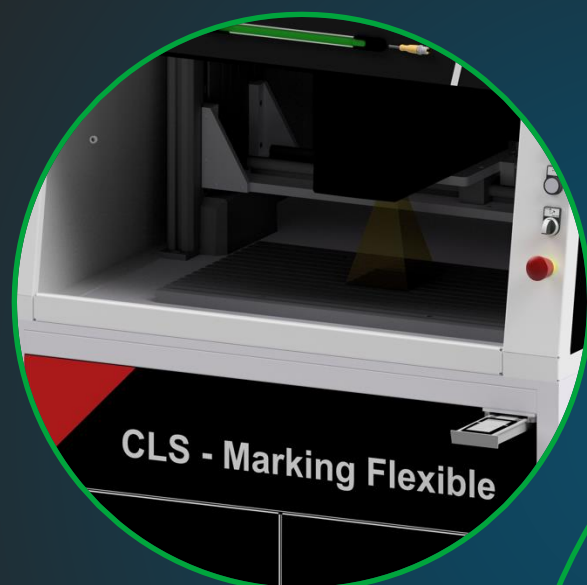
## Accessories

Control SPS	for integration into automated processes
Traversable x-Axis	manual cross adjustment
Panel PC	incl. mounting and Marking Builder Plus
Suction Access	small suction cup for workshop use with universal filter
Suction Nano+	controlled suction for universal serial operation
Suction big for PVC	controlled suction for PVC marking
Contour / replace mouthpiece	manufactured according to your component CAD data
Product holder	manufactured according to your component CAD data
Product slide table	for special applications if the installation space is not sufficient
Console frame and workspace	all dimensions can be customized to suit individual customer requirements

# CLS – Marking Flexible

The most flexible laser safety cell, adaptable to your application.

Maximum flexibility and freedom despite the closed labelling cabin.



Utilisation of the entire working range by moving the laser in the x and z directions

Various extraction systems

Functionality meets ergonomics, the CLS - Marking Flexible



Do you need customised solutions?  
Please contact us.

# CLS – Marking Flexible

## Technical Data

Housing dimensions (L x W x H)	1.000 x 1.000 x 2.100 mm	
Workspace dimensions	600 x 400 x 400 mm	
Traversing range z-Axis	400 mm (electric)	
Lifting door dimensions	700 x 400 mm	
Laser safety	Cell with elect. secured lifting door	Laser class 1, secure Performance Level e
Control options	Small control unit smart, SPS	
Marking Laser	Keyence MD-X, MD-U, MD-F, ML-Z	adapted to your labeling requirements
Labeling area dimensions	120 x 120 mm or 330 x 330 mm	depends on laser
Suction cup connection	DN50	
Electrical connection	230 V, 50 Hz	

## Basic configuration

Laser Safety	Cell with elect. secured lifting door
Control system	Small control unit smart
Electric lifting columns	400 mm (Traversing range)
Cell lighting	LED white
T-grooved plate	375 x 500 mm (Aluminum)
Laptop holder	375 mm (Pick-up width)

## Accessories

Control SPS	for integration into automated processes
Traversable x-Axis	manual cross adjustment
Panel PC	incl. mounting and Marking Builder Plus
Suction Access	small suction cup for workshop use with universal filter
Suction Nano+	controlled suction for universal serial operation
Suction big for PVC	controlled suction for PVC marking
Contour / replace mouthpiece	manufactured according to your component CAD data
Product holder	manufactured according to your component CAD data
Product slide table	for special applications if the installation space is not sufficient
Console frame and workspace	all dimensions can be customized to suit individual customer requirements